

Safe Use of Chainsaws in Construction

OHBA Safety Pages

- Chainsaws for construction must be equipped with a chain brake and with anti-kickback chain.
- Whether a chainsaw is electric- or gasoline powered, operators must follow the manufacturer's recommended safe operating procedures.
- Permit only trained and experienced workers to operate a chainsaw.
- Never walk around with a saw in the operating mode. Switch off the power source.
- Do not attempt to cut anything other than wood with a chainsaw.
- When operating a chainsaw, safety glasses and hearing protection must be worn at all times.
- Face shield and hard hat may also be required, depending on the hazards.
- Trousers or chaps with ballistic nylon pads sewn in provide protection to the legs.
- Hold the saw securely with both hands, with fingers and thumbs around the handles. This helps prevent the hands from being dislodged and provides control in the event of a kickback.
- Do not operate the saw when you are tired.
- Know where the bar tip is at all times.
- Don't allow the cut to bind (close) on the saw chain.
- Make sure the chain brake is functioning.

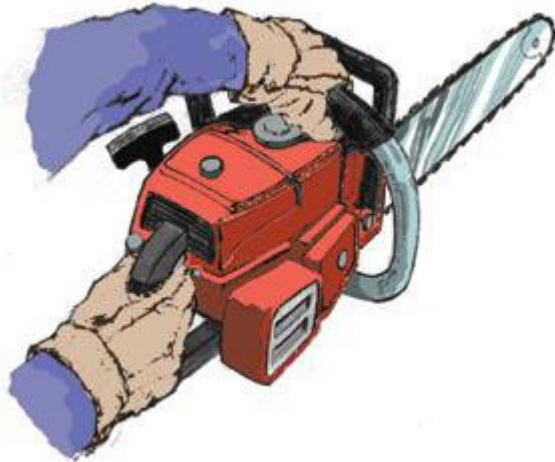
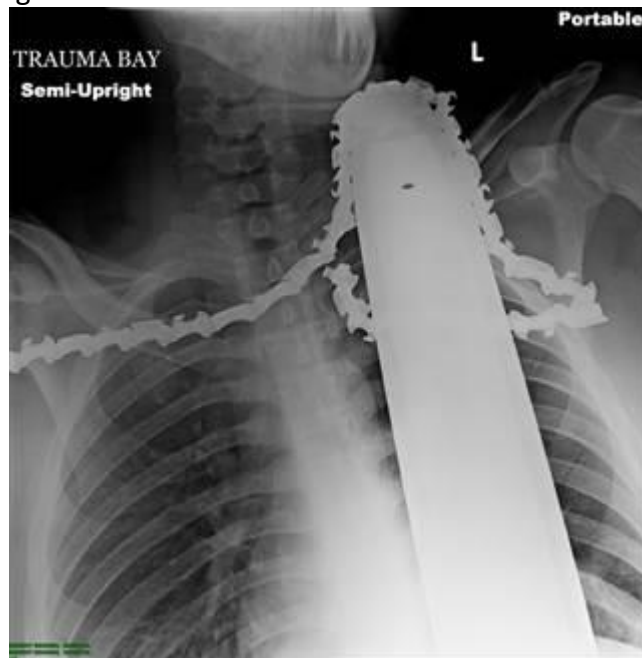


Diagram showing proper grip of a chainsaw



The result of a kick-back and chain break



The information we provide is not intended to include all possible safety measures and controls. In addition, the safety information we provide does not relieve the Members of its own duties and obligations with regard to safety concerns, nor does Oregon Home Builders Association guarantee to the Members or others that the Member's property, job sites and/or operations are safe, healthful, or in compliance with applicable laws, regulations or standards. The Members remain responsible for their own operations, safety practices and procedures and should consult with legal counsel as they deem appropriate.

SAFETY PAGE MEETING GUIDE

Topic: Chainsaw Safety

Employer: _____ Project: _____

Date: _____ Time: _____ Shift: _____

Number in crew: _____ Number attending: _____

Safety or Health issues discussed. Include recent accident investigations and hazards involving tools, equipment, the work environment, work practices and any Safety or Health recommendations:

Follow up on recommendations from last safety meeting:

Record of those attending:

Name: (please print)	Signature:	Company:
1.		
2.		
3.		
4.		
5.		
6.		
7.		
8.		
9.		
10.		
11.		
12.		

Supervisor's remarks: _____

Supervisor: _____ (Print) _____ (Signature)